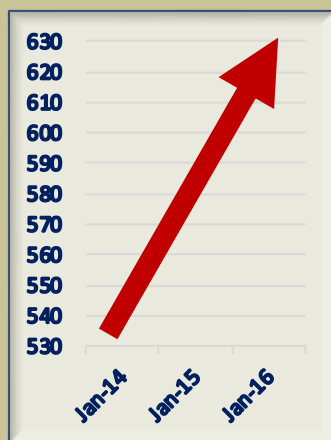


MOREHEAD CITY COUNTRY CLUB

**LAST CALL!!!
MEMBERSHIP
CAPACITY IS NEAR!
MEMBERSHIP HAS
REACHED OVER 630!**



Clubhouse: 252-726-4917

Manager: 252-342-0951

www.moreheadcitycc.com

Email: moreheadcitycountryclub@gmail.com

Board of Directors

President ~ Doug Creech

Vice President ~ Rob Watson

Financial ~ Jim Renfrow

Sean Lewis

Pete Miller

Bob Stallings

Roger Waniataa

Elywn Wood

Manager

Nick Eatmon (252) 342-0951

Email: moreheadcitycountryclub@gmail.com

Business Office

(252) 726-4917

Email: mccc2900@gmail.com

Golf Professional

John Trujillo (910) 512-2966

Email: johntrujillo@moreheadcitycc.com

Superintendent

William Toms (252) 230-1391

Food & Beverage Manager

Jennifer Trujillo (910) 612-5186

Email: jenntrujillo@moreheadcitycc.com

Club Caterer

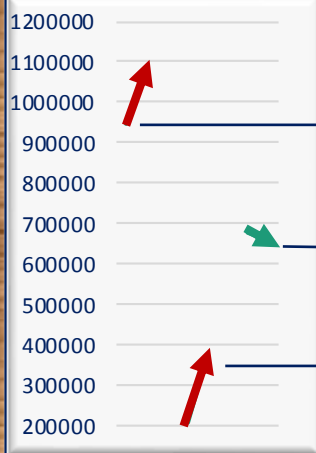
Johnny Chaanine (252) 646-2650

Golf Professional / Club Repair

Troy Forguites (802) 558-1262



STRONGER THAN EVER! OPERATIONS REPORT ~ Nick Eatmon



Financial comparison fiscal year 2011-2012 to fiscal year 2015-2016

Dues income has increased by over \$135,000
a year from 2011-2012

Income from golf has fallen approximately
\$25,000

Food & beverage income has increased by
over \$160,000!

Net increase of nearly 100 members in less than 4 years! MCCC reached a low in membership in 2011 of 533 members. Since then there has been steady growth. What changed?

1.) Change in demographics and spending: Not only has the membership increased the membership has gotten younger. While golf related income decreased by 17% per membership, food and beverage related income increased by an astounding 60% per membership!

Looking further into the numbers: The decrease in income through golf related income is a troubling number. **Something to think of:** Membership over the last 12 months has reached 631 family memberships. Lets say the top 10% of the membership averages 100 rounds a year. This would total 6,310 rounds with guest rounds adding another 5,000 rounds a year. Totaling 11,310 yearly rounds. If the remaining family memberships play 40 rounds a year the club reaches approximately 34,000 rounds. Up to 35,000 is deemed to be the maximum number of rounds played while also ensuring top playing conditions.

The bottom line: With members on average playing less golf the club is allowed to extend membership capacity over 600 members. The gain in dues is higher than the loss of golf related revenue. With current spending the club can extend membership to 650 and stay under 35,000 rounds.

2.) Food & beverage: Food & beverage has exploded. What is the full impact of the growth in food & beverage? As mentioned earlier golf related income has decreased. If the club wasn't offering more through the food & beverage department the club would not have increased membership to where it is today. The increase in food & beverage diversifies the club like never before.

3.) Membership dues: In 2010 a new dues structure was introduced. Since 2010 average dues per membership has increased from \$1,500 a year to over \$1,700.

4.) Expenses before projects has been decreased by approximately \$60,000 since 2012.

(Financial report continued page 2)

**RECEIVE WEEKLY NEWS CONCERNING EVENT SIGN UP, OPERATIONS,
EVENT RESULTS AND PICTURES OF CLUB HAPPENINGS. ALL YOU HAVE TO
DO IS SIGN UP FOR THE WEEKLY CLUB NEWSLETTER THROUGH EMAIL.**

3 Ways to receive email. Send your email to moreheadcitycountryclub@gmail.com

Visit www.moreheadcitycc.com and leave your email

or leave your email address with the business office or pro shop staff.

STRONGER THAN EVER!

In the last 12 months, the club has been able to budget over \$400,000 in improvements. \$120,000 in golf improvements includes tee work, bunkers, driving range, trees, cart paths and irrigations system. \$85,000 in equipment purchases including greens mowers, tee mower and utility vehicles. Approximately \$180,000 in clubhouse and pool improvements which include, flooring, bathrooms, paint, furniture, HVAC units and tent. The club has also been able to increase the entertainment budget by \$20,000.

STRONGER THAN EVER!

In the last 12 months, the club has been able to budget over \$400,000 in improvements. \$120,000 in golf improvements includes tee work, bunkers, driving range, trees, cart paths and irrigations system. \$85,000 in equipment purchases including greens mowers, tee mower and utility vehicles. Approximately \$180,000 in clubhouse and pool improvements which include, flooring, bathrooms, paint, furniture, HVAC units and tent. The club has also been able to increase the entertainment budget by \$20,000.

LEARNING FROM THE PAST WHILE KEEPING AN EYE ON THE FUTURE

In 1998 renovations took place to the golf course elevating the course to the top of the area. A 15 year loan was introduced and the club was able to depreciate money spent on improvements over 15 years. Today depreciation no longer exists. As noted the clubs income and profit dwarfs at any time in club history. A lack of depreciation and all time high profit leaves major tax consequences. The clubs tax bill could reach \$200,000 in 2017. With continued growth the tax bill would only become larger for each subsequent year. The Board of Directors have formed a planning committee made up of Board members along with additional members.

LEARNING FROM THE PAST WHILE KEEPING AN EYE ON THE FUTURE

In 1998 renovations took place to the golf course elevating the course to the top of the area. A 15 year loan was introduced and the club was able to depreciate money spent on improvements over 15 years. Today depreciation no longer exists. As noted the clubs income and profit dwarfs at any time in club history. A lack of depreciation and all time high profit leaves major tax consequences. The clubs tax bill could reach \$200,000 in 2017. With continued growth the tax bill would only become larger for each subsequent year. The Board of Directors have formed a planning committee made up of Board members along with additional members.

Activities by Importance

Activity	Mean Rating*	% Rating Important
Fitness & Wellness	4.6	94%
Youth Programs	4.5	94%
Dining Programs	4.1	82%
Golf	4.0	81%
Social Events	4.0	79%
Banquets & Private Parties	3.9	83%
Swimming	3.8	70%
Lifestyle Amenities	3.8	66%
Tennis	3.7	62%
Specialized or Niche Programs	3.3	38%
Boating, Sailing or Yachting	3.2	26%

**5=Very Important, 1=Very Unimportant*

Activities by Importance

Activity	Mean Rating*	% Rating Important
Fitness & Wellness	4.6	94%
Youth Programs	4.5	94%
Dining Programs	4.1	82%
Golf	4.0	81%
Social Events	4.0	79%
Banquets & Private Parties	3.9	83%
Swimming	3.8	70%
Lifestyle Amenities	3.8	66%
Tennis	3.7	62%
Specialized or Niche Programs	3.3	38%
Boating, Sailing or Yachting	3.2	26%

**5=Very Important, 1=Very Unimportant*

Statement	% Agree	% Disagree	% Neutral
Family-oriented clubs will prosper in the future.	89%	1%	10%
Golf-only clubs will struggle.	61%	15%	24%

Above is a nations survey from McMahon Industries focusing on private golf clubs. While eastern North Carolina is unique it is always important to keep an eye on national trends.

Quick question: What would you say if someone offered you a new house along with a new car and a new boat, all for the same price as your current mortgage payment?

Most would ask what's the catch?

The Board of Directors and planning committee are committed to spending your money wisely. The answer to the question above is there is no catch. **THERE WILL NOT BE A DUES INCREASE OR ASSESSMENT!** The goal is for MCCC members to have it all.

In 2013 the club set a goal to become the #1 value club in all of the Carolinas. The club is well on it's way! What the Board of Directors and the planning committee are discussing is how to improve overall club assets. MCCC has a 50 year old clubhouse, 40 year old pool and a course nearing 20 years since renovation.

The reality is Morehead City Country Club is in a uniquely strong position. There isn't another club which has the totality of the following. Private club with over 600 family memberships. A club with highly valuable property and memorable views. An area which is expected to grow by 7,500 residence in the next 10 years and to grow by over 20,000 second home residence. A club which has grown to making approximately \$500,000 a year!

As a member you should be thinking how you would avoid \$200,000 a year in tax payments. What improvements if any you would like to see the club achieve. This is the beginning of a long process. Decisions will not be made over night. Your input is important!

This image shows a single sheet of white paper with horizontal blue lines, resembling notebook paper. The lines are evenly spaced and run across the width of the page. There is no handwriting or other markings on the paper.

Thank You THURSDAYS

Thursdays are AWESOME
at MCCC!

Food specials include \$7 pizza and 50 cent wings. Plus drink specials starting with \$1.50 beer!

March through October
Complimentary clinics for juniors from 4:30-5:30 and the entire membership from 5:30 to 6:30

In the summer. Pool movie night!

Oh Yes! IT'S FREE

Member appreciation!
Throughout the year members have
FREE events! FREE golf
tournaments! FREE socials!

Culminating, September 30th with a
FREE lunch, FREE golf tournament
with \$1,500 in prizes, FREE dinner,
FREE drinks &
FREE social/band party!



\$3 9-Hole Cart Fees
EVERYDAY AFTER 3:00!

\$3 Goes a long ways at MCCC
Check out the food menu!
PLUS

Ice cold beer everyday \$2!
Liquor drinks starting at \$3!
Wine \$4.50

Thursday prices:
Beer \$1.50,
House Liquor \$3, Wine \$3

CLOSING IN ON MEMBERSHIP CAPACITY



- Over 630 family memberships can't be wrong!
- Members have the opportunity to receive over \$1,000 in value through parties, lessons & tournaments each year!
- All dues structures at or under \$200 a month!
- No initiation options available!
- #1 Year Round Entertainment Calendar in Carteret County
- "Best bentgrass greens in eastern North Carolina." MCCC member and World Golf Hall of Fame member Curtis Strange
- Unmatched combination of food and drink prices
- No extra fees for use of practice facilities
- Unlimited walking privileges
- Best merchandise prices in town
- No charge to book the ballroom for your own event

No initiation options: Quarterly Dues

Resident	\$600	Non-Resident	\$500
Junior Under 40	\$400	Junior Under 30	\$362.50

With \$1,000 initiation: Quarterly Dues

Resident	\$515	Non-Resident	\$458.75
----------	-------	--------------	----------

All rates include mandatory range fee.

Each category is subject to a one time \$100 stock certificate fee



All Members receive one hour of complimentary lessons each year!



Play courses in the area and all over the nation at reduced rates!



Member's children under the age of 16 ride for free with a paying adult!

Busy offseason! Income is up over \$80,000 from the prior year for months October through March!

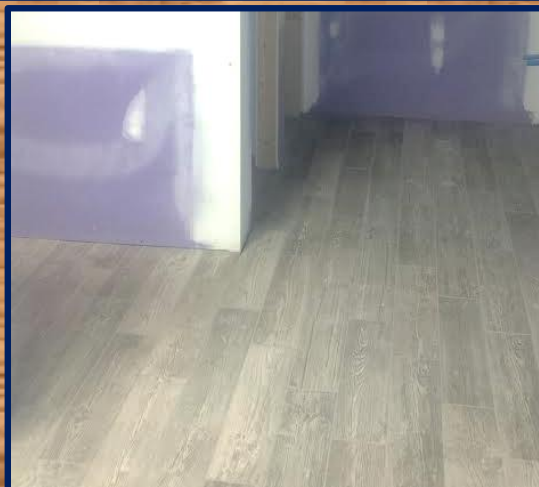
- Bunkers on 1,2, 4 & 8 have been renovated. Drainage has been improved and old sand has been replaced!
 - Ceilings throughout the clubhouse have been replaced and new recessed lighting has been installed
 - The biggest project! Both bathrooms in the clubhouse are in the process of renovation. They will be complete in the middle of April.
 - Both bathrooms will have new cabinetry, lockers, flooring, stalls, toilets, ceiling, mirrors and lighting.
- Bathroom renovation have been a major project and the members understanding has been greatly appreciated!

What's next?

- In the clubhouse there will be a universal handicap stall at the end of the hallway.
- Bathroom improvements on the course
- On the golf course the crew will continue to work on bunkers.
- The majority of new tee boxes will be ready to play in early April.

Recent equipment purchases include:

Tee mower, utility vehicles and a new beverage cart will be here in early May!



Just like Augusta! August National makes changes each year to the length of their holes to test the best golfers in the world. MCCC's tee changes are a little different! While the back tees are lengthened by over 100 yards the up tees are 600 yards shorter.

FORGET TEE COLOR! An example of recommended play according to driving distance & handicap:

250 Yards & Over – Black Tees, 215-249 – Blue Tees, 180-214 – White Tees 145-179 – Gold Tees, Under 145 Yards – Red Tees
These are only recommendations. Any player male or female can play any tees they desire.

For tournament purposes: Men under 65 will have the blue tees as their standard tee. Ages 65 to 79 standard tees will be the white tees. Over 79 years of age will use the gold tees. Women under 65 standard tee will be the gold tees. Over 65 standard tee will be the red tees.

Note the black tees are new with all other teeing areas moving up one tee box. Some tee yardage may be slightly different once completed.

	New Black Tees Compared to Current Blue	New Blue Tees Compared to Current White	New White Tees Compared to Current Gold	New Gold Tees Compared to Current Red	Red
1	433 / 433	388 / 388	339 / 339	304 / 304	255
2	169 / 169	154 / 154	140 / 116	116 / 92	92
3	425 / 411	380 / 391	338 / 318	287 / 287	250
4	526 / 526	506 / 506	440 / 473	395 / 426	340
5	185 / 181	168 / 168	130 / 123	120 / 111	110
6	328 / 328	316 / 316	289 / 289	265 / 274	225
7	290 / 281	274 / 274	250 / 250	240 / 228	215
8	475 / 452	455 / 443	418 / 418	376 / 376	330
9	327 / 327	320 / 320	296 / 296	275 / 275	215
	3158 / 3108	2961 / 2960	2640 / 2622	2378 / 2373	2032
10	178 / 178	168 / 168	140 / 140	108 / 108	90
11	371 / 371	345 / 362	310 / 275	275 / 246	245
12	339 / 339	323 / 323	295 / 305	263 / 292	230
13	175 / 175	149 / 149	130 / 115	115 / 95	95
14	517 / 497	495 / 488	445 / 445	395 / 395	340
15	200 / 179	165 / 156	147 / 147	136 / 136	120
16	500 / 500	487 / 487	440 / 406	389 / 389	350
17	440 / 440	386 / 386	323 / 323	288 / 288	255
18	543 / 523	501 / 501	459 / 459	390 / 390	345
	3263 / 3108	3019 / 3020	2689 / 2615	2358 / 2339	2070
	6421 / 6310	5980 / 5980	5329 / 5237	4736 / 4712	4102

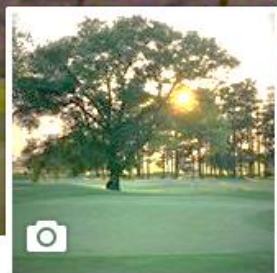
TEE IT FORWARD By USGA April 4, 2013

Introduced in 2011, *TEE IT FORWARD* is a joint initiative between the USGA and The PGA of America that encourages players to play from a set of tees best suited to their driving distance. In addition to providing more enjoyment for golfers, teeing it forward also can be one of the most important steps that golfers take in improving pace of play.

A 2012 survey of *TEE IT FORWARD* participants found that: 56 percent played faster, 56 percent are likely to play golf more often, 83 percent hit more-lofted clubs into greens, 85 percent had more fun, 93 percent will *TEE IT FORWARD* again

More from the USGA: One question that arises is, "Will my Handicap Index® still be portable from a forward tee?" When posting a score from a more forward set of tees, for example, that set of tees will have Ratings that are in accordance with a shorter total yardage (e.g., a 6,500-yard set of tees may have a men's USGA Course Rating of 71.0/Slope Rating of 120, whereas a 5,500-yard set of tees for men may be rated 66.0/110; a 5,500-yard set of tees may have a women's rating of 71.4/114, whereas a 4,500-yard set of tees for women may be rated 65.8/101). The player's total score is usually going to be lower by playing a shorter set of tees, but the ratings are going to be lower, respectively, to compensate for the difference. Thus, the Handicap Index and Handicap Differential™ produced from each round played should be about the same and keep a Handicap Index portable from tee to tee, course to course.

**WITH FACEBOOK & WEEKLY EMAILS
STAY CONNECTED LIKE NEVER BEFORE!**



Morehead City Country Club

Golf Course · Social Club · Swimming Pool

Timeline

About

Photos

Reviews

More



SOME OF THE LATEST FACEBOOK PICTURES



HOLE IN ONES EVERYWHERE!



FOLLOW DAY TO DAY ACTIVITIES!



DOZENS OF PICTURES FROM SANTAS VISIT!

- Join Facebook and Instagram, If you've already joined take this opportunity to like Morehead City Country Clubs through the clubs facebook page and please rate 5 stars, invite your friends to do the same. If you're worried about joining contact Nick or Jen and they will inform you on the benefits of the site. If you're not sure how to join follow the steps below. There are no commitments when you join and you identify what content you would like to see.
- When on Facebook you will be able to sign up for events at the club and see others who are also joining the event. You will have the opportunity to make choices for the club such as drink and food specials, be the first to see the latest pro shop sales. You will be connected to the club like never before.
- Facebook Facts from Legendary Marketing
 - More than 600 million active users
 - 50% of active users log on to Facebook in any given day
 - Average user has 130 friends
 - People spend over 700 billion minutes per month on Facebook
 - There are over 900 million objects that people interact with!

Step 1 visit www.facebook.com and fill out the information under Sign up on the right of the screen then press the green sign up button. When you're entering your email you will not receive any other information other your facebook information. No spam.

Step 2 ~ You can look for friends who are also on the internet or you can skip this step by pressing skip this step, located on the bottom of the screen. From there Facebook will ask for additional information. You can skip these pages if you choose.

Step 3 ~ At the top of the screen where the magnifying glass is type in Morehead City Country Club and press enter

Step 4 You've made it to Morehead City Country Club page! Press the like button on the bottom of the picture of hole 18. You can then press on the 5 stars to rate us if you choose. If you're new to Facebook it is a great platform to connect with friends and please invite your friends to like and rate Morehead City Country Club.

MONEY – MONEY – MONEY!

Members to receive over a number of promotional benefits when they are signed up through email, facebook or instagram. To sign up for email send your email address to

www.moreheadcitycountryclub@gmail.com

Social Calendar

- Thank you Thursday every Thursday (Pizza, Wings & Drink Specials. Plus Complimentary Clinics for the Entire Membership Starting in March)
- Twilight Dinner Second Tuesday of Each Month
- Stag Night Third Wednesday of Each Month
- Wednesday Shootout Dinner March 16th - November 2nd
- Weekend (Saturday or Sunday) themed dinners July-August

April 8th

Comedy Night / Keith Barany

May 2nd

Member Dinner

May 20th

Band of Oz

May 28th

Pool Opening Member Appreciation Cookout

June 11th

Casino Night

June 23rd

Member Appreciation Pizza Night

June 24th

Band Party (North Tower)/ Joel Givens

July 4th

Member Appreciation Pool Party

July 23rd

Band Party (Backyard Groove)

July 29th

Band Party (Holiday Band)

August 20th

Band Party (Mighty Saints of Soul)

September 30th

Member Appreciation Band Party (Blackwater Rhythm)

October TBD

November TBD

Band of Oz

December 10th

Christmas Party (Steve Owens Band)

Tournament Schedule

- Shootout Every Wednesday March 16th - November 2nd
- Twilight Golf Second Tuesday of Each Month
- Skins and Hole in One Game Weekends May-August

April 2nd

Play The K Boys & Girls Club Fundraiser

April 9th

ABCD

April 14th

West Carteret Band Fundraiser

April 28th

Carteret Community Foundation Fundraiser

May 2nd

MCCC Pro-Am

May 5th

Gramercy Fundraiser

May 20th

Chalk & Gibbs Epilepsy Fundraiser

June 2nd

1st United Methodist Fundraiser

June 11th

ABCD

June 24th-26th

Member/Guest

July 4th

Flag Day

July 23rd-24th

Member/Member

July 29th

First Tee Classic

August TBD

Ellingsworth Memorial

August 20th-21st

50th Pucell Jones Seafood Invitational

September 17th-18th

Club Championship

September 30th

Member Appreciation

October 3rd

East Carolina Seniors

October 10th-11th

Down East Women's Golf Association



Dinner and a Show Comedy night with Keith Barany Friday, April 8th

Chick & Shrimp dinner begins at 6:30
with the show starting at 8.

Members \$25, Members Guest \$40.

**NY Post: "The wittiest comedian
working today."**

TV shows he helped write: Seinfeld –
Politically Incorrect – The Jimmy
Kimmel Show – 2004 Emmys
Entertaining US troops overseas, 5
times in 4 years.

Some of the stars he's appeared with:

Bob Hope – Jerry Seinfeld – Joan
Rivers – Ray Romano
– Jon Stewart – Joy Behar – Lewis
Black – Ray Charles



ABCD Tournament Saturday, April 9th

Shotgun Start at 1:00

Lunch before play included
Tournament \$100 includes Comedy
night for player and guest
\$75 to play in the tournament only



New 2,400 square foot tent, with lights, stage,
tables, chairs and 400 square foot dance floor!

Total package for \$1,200
without dance floor and stage \$1,000



Members can book the ballroom at no charge!

- New flooring, paint, chairs, window treatments and dj equipment!
- New ceiling coming soon!
- 2,300 square foot, seats 120 comfortably
- For complimentary room fee caterings must be through MCCC. \$500 room fee otherwise

LGA News

October 13th, Back 9 Twice

Gross
1st Janet Smith
2nd Joyce Olsen
3rd MaryLee Cuthrell
Net
1st Kathy Gould
2nd Barb Chambers
3rd Sandy Woods

October 20th ABCD

1st Dell Ericksen, Barb Chambers,
Carol Wray
2nd Janet Smith, Jerri Brooks,
Janice Moore
3rd Peg Stallworth, Kay Jaenike,
Mary Adamson, Glenda Baker
4th Helen Goodman, Dottie
Guthrie, Sandy Woods, Jane Walter

October 27th Member Guest

1st Flight
Gross
1st MaryLee Guthrell/Pam Tysor
2nd Joy Bell/Tina Stewart
3rd Helen Goodman/Pudgy
Groben
Net
1st Sandy Woods/Kris Engelhaupt
2nd JoAnne Harrell/Blind Draw
3rd Janet Smith/Janice Sochalski
2nd Flight
Gross
1st Barbara Chambers/Nancy
Fisher
2nd JoAnne Boles/Pat Chamblee
3rd Jerri Brooks/Shirley Marsicano
Net
1st Janice Moore/Edna Anderson
2nd Rosie Angel/Maggie Bagg
3rd Parmie Byrd/Nan Prendergast

Closest to the Pins

#2 Pat Chamblee
#5 Pam Roberson
#10 Diane Hicks
#13 Pam Roberson
#15 Kris Engelhaupt

Aces of the Month

October- Rosie Angel
November- Dell Ericksen
Masters
1st Rosie Angel – 15
(Phil Mickelsen)
2nd Sandy Woods – 14
(Ernie Els)
3rd Susan Wellborn – 10
(Bubba Watson)

Match Play

1st Sandra McDonald
2nd Sandy Woods
Consolation – Peggy Stallworth

Hole-In-One – Melba Martin Hole-In-One – Peggy Stallworth

Broke 100 – Janice Moore
Broke 80 – Helen Goodman

State Play Day – Iris Odell

Ace of Aces – MaryLee Cuthrell
Runner Up – Sandy Woods

Most Improved – Peggy Stallworth
Runner Up – Mary Adamson

End of Year Winners

Ringer Board Cards

1st Flight
Gross Score
1st MaryLee Cuthrell
2nd Joyce Creech – 64
Birdies
1st MaryLee Cuthrell -16
2nd Joyce Creech & Helen
Goodman – 11
Chip-Ins
1st Joyce Olsen - 6
2nd Joyce Creech - 5

2nd Flight
Gross Score
1st Susan Wellborn – 68
2nd Mary Adamson – 69
Birdies
1st Kay Jaenike – 6
2nd Mary Adamson – 5
Chip-Ins
1st Kay Jaenike - 5
2nd Melba Martin & Mary
Adamson - 2
3rd Flight

Gross Score
1st Rosie Angel - 73
2nd Parmie Byrd - 74
Birdies
1st Rosie Angel -6
2nd Sandy Woods – 5
Chip – Ins
1st Sandy Woods – 8
2nd Parmie Byrd – 4

Turkey Shoot

Gross
1st Dell Ericksen
2nd Parmie Byrd
3rd Mary Adamson
Net
1st Rosie Angel
2nd Kathy Gould
3rd Sandy Woods

December 15th ABCD

1st Place
Peggy Stallworth
Melba Martin
Barbara Chambers
Patti Summerlin
2nd Place
Joyce Creech
Ali Creech
Judy Baron
Cathy Gould

Tuesday January 12

Ace of the month

1st gross Dell Ericksen
2nd gross Peggy Stall worth
3rd gross Kay Jaenike

1st net Barb Chambers - Ace
of the Month
2nd net Joyce Olsen
3rd net Cathy Gould

Tuesday January 26

1st gross Joyce Creech
2nd gross Joyce Olsen
3rd gross Ginger Oates

1st net Sandy Woods
2nd net Cathy Gould
3rd net Parmie Byrd

Tuesday February 2

1st gross Helen Goodman
2nd gross Dell Ericksen
3rd gross Melba Martin

1st net Marylee
Cuthrell Ace of the Month
2nd net Sandy Woods
3rd net Joyce Creech

Tuesday March 1st

1st gross Marylee Cuthrell
2nd gross Barb Chambers
3rd gross Helen Goodman

1st net Melba Martin Ace
of the Month
2nd net Kathy Gould
3rd net Sandy Woods

Tuesday March 8th

1st Peggy Stallworth
2nd Melba Martin
3rd Joyce Creech
3rd Ginger Oats

Tuesday March 15th

1st gross Dell Ericksen
2nd gross Marylee Cuthrell
3rd gross Peggy Stallworth

1st net
Barb Chambers/Melba Martin
2nd net
Carol Wray/Janice Moore

Tuesday March 22

Winners of Beat the Pro
Parmie Byrd Joyce Olsen
Kathy Gould Melba Martin
Sandy Woods MaryLee Cuthrell
Joyce Creech Helen Goodman

Tuesday March 29

Winners of Texas Scramble
1st Gross
MaryLee Cuthrell
Kay Jaenike
Judy Baran
Patti Summerlin

1st Net
Joyce Creech
Joyce Olsen
Parmie Byrd

2nd Gross
Dell Ericksen
Barb Chambers
Sandy Woods

2nd Net
Helen Goodman
Melba Martin
Susan Wellborn



TWILIGHT GOLF 2ND TUESDAY OF EACH MONTH

9-holes of superball golf with
dinner afterwards.

Sign ups on the porch in front
of the pro shop

Can sign up for
golf, dinner or both.



THE SHOOTOUT IS A HIT!
9-HOLES EVER WEDNESDAY
SHOTGUN START 5:00



**Roger Waniata Hole in One on #2 \$500
 winner in the first shootout of the year!**

Entry: Members \$20, Members Guest \$35
 Format: Best Ball Gross & Best Ball Net out of 4 Players
 \$500 for every Hole In One!
 Teams will be drawn by the staff.

All players receive \$5 off dinner following play.
 Order off of the menu or order the special of the day.
 Even if you can't make the shootout come out for dinner.

Register at www.moreheadcitycc.com or
 Call the Golf Shop by 4:30 on Wednesday 252-726-4917



**Tournament Winnings
 Can Now Be Used For
 Merchandise and Food
 After 5:00**



**Member appreciation complimentary tournament
 and cookout!**

**Mike Small
 Hole In One #2
 Winner of \$500!**

**9-Hole Par 3 Results
 March 27th**

1st \$50 Each~Score -6
 Tanner Norris, Mike Small
 Terry Senich, Sarah Mullikin

2nd \$37.50 Each~Score -5
 Bryan Williams, Lin Byrd
 Wic Southern, Donna Manning

T4th \$3.12 Each~Score -3
 Mike Bradshaw, Mort Congleton
 Richard Parker, Terry Senich

T4th \$3.12 Each~Score -3
 Sean Lewis Jr. Doug Creech
 Louis Weil, Norm Price

T4th \$3.12 Each~Score -3
 Don Waters, Roger Waniata
 Carol Council, Janice Moore

T4th \$3.12 Each~Score -3
 Mike Brian, Chris Pearson
 Joyce Creech, Tandra Garner



PGA

Carolinas Section

PRO-AM

Monday, May 2, 2016

Morehead City CC - Morehead City, NC

Entry: \$100 for professionals and \$100 for amateurs.

Includes range Sunday/Monday, \$16 practice round fee for guests Sunday. Lunch and dinner following play.

Starting Time: Shotgun start 11:00 AM.

Of Amateurs: Professional brings 1 amateur.

Format:

1 Best Ball Gross Plus 1 Best Ball Net (2 Different Balls)

CASINO NIGHT SATURDAY JUNE 11TH FROM 7 TO 10

Members \$40, Members Guest \$60

Heavy appetizers beginning at 6



ABCD TOURNAMENT

Saturday, June 11th

Shotgun Start at 1:00

Tournament Entry \$125

Includes cart, lunch & casino night for players and guest
\$75 to play in the tournament only

MEMBER GUEST - JUNE 24-26

Entry: \$175 per player

Format: Match play against the other 5 teams in your flight



Sign up online or in the golf shop.

www.moreheadcitycc.com

Quick reminders: Limited open bar all weekend for you and your guests and the pool will be open all weekend for your guests.

Schedule

1 Complimentary Practice round to be played the week of the tournament. Practice round must be completed by 2:30 on Friday.

Friday

First nine hole match - Shotgun Start 3:00

Heavy appetizers beginning at 6:30.

North Tower Band from 7 to 11

Saturday

Breakfast beginning at 7:30

Second nine hole match - Shotgun Start 9:00

Third nine hole match - Shotgun Start 11:30

Grab & Go lunch provided during play

Sunday

Breakfast beginning at 7:30

Fourth nine hole match - Shotgun Start 9:00

Fifth nine hole match - Shotgun Start 11:30

Grab & Go lunch provided during play

Awards following play



JULY 23RD & 24TH

Entry \$175 - 120 Player Max

Shotgun Start Both Days at 9:00

Format: 9 Holes Each: Best Ball Net, Texas Scramble, Superball & Alternate Shot

Entry includes lunch & breakfast each day, drinks on the course and party Friday night for player and guest.

Backyard Groove Band playing from 7 to 11.

Sign up deadline Wednesday July 20th

Sign up online or in the golf shop. www.moreheadcitycc.com

WEST CARTERET
BANDS



WCHS BANDS
GOLF TOURNAMENT

Thursday
**APRIL 14
2016**



MOREHEAD CITY COUNTRY CLUB

GOLF TOURNAMENT *to benefit* **WCHS BANDS**

- Tee Off 1:00 PM
- \$75 per person
- Includes golf & dinner
- Hole sponsorships \$100

Player Names/Handicap

Player 1 _____ / _____

Phone Number _____

Player 2 _____ / _____

Player 3 _____ / _____

Player 4 _____ / _____

Tickets for "dinner only" \$10 for BBQ dinner + live Jazz music

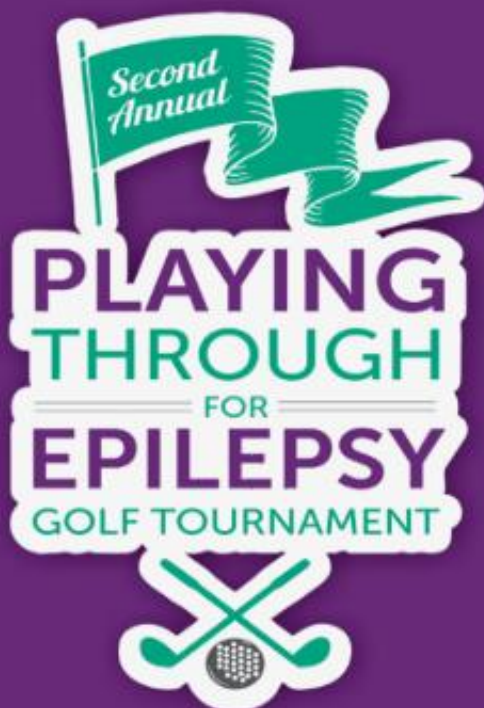
Make Checks Payable to:

WCHS Bands
c/o Budget Blinds
1103 N. 20th St. Suite D
Morehead City, NC 28557

Questions

Mary Utz
252-342-5863
cutz@budgetblinds.com





MAY 20
MOREHEAD CITY
COUNTRY CLUB

GOLF TOURNAMENT 12:00PM

**COCKTAILS and
HELICOPTER BALL DROP
6:00PM**

**DINNER & BAND of OZ
6:30PM 7:00PM**

**NEW
THIS
YEAR**

**HELICOPTER
BALL DROP**



1	2	3
PLACE	PLACE	PLACE
\$3000	\$1500	\$500

Closest to the pin wins



**EPILEPSY
FOUNDATION**

The Epilepsy Foundation, a national non-profit with 48 affiliated organizations throughout the United States, has led the fight against seizures since 1968. The Foundation is an unwavering ally in individuals and families impacted by epilepsy and seizures.



1 in 26 people in the US will develop Epilepsy.



6 out of 10 people diagnosed with Epilepsy, the cause is unknown.

**COME OUT
AND
SUPPORT
A
GOOD
CAUSE**

100% of the proceeds will be donated to the local medication fund and research to help find a cure.

CONTACT
STEPHEN CHALK, CHALK & GIBBS
252.726.3167
stephen@chalkandgibbs.com

CG Foundation Inc is a 501 (c) 3 nonprofit corporation

celebrating 50 YEARS Purcell Jones Seafood Invitational

50th Purcell Jones Seafood Invitational ~ August 20th & 21st

Format: 36 Hole 2-Person Best Ball. 8 Teams per flight with a full field. 1st, 2nd & 3rd place winning prizes. Prizes will also be awarded to the Low Individual Champion Under 50, Senior Champion (50-64), Super Senior Champion (65 & Over), Overall Women Champion. Individual Champions payout based on number of players in each division.

Entry Fee: Members \$150, Guests \$185

Includes: Music by The Mighty Saints of Soul Friday Night., with Seafood Buffet 6 to 8 & open bar from 6 to 10. Fried flounder and fries casual dinner on Saturday Night from 7 to 9 with open bar from 7 to 10. Breakfast and lunch both days.

Practice Round Fee: \$16 for guest, book tee time up to 7 days in advance. Practice rounds available Thursday or Friday.

Flights/Handicaps: Teams will be pre-flighted according to USGA handicap index. Teams having more than a 5 stroke differential between handicaps will have higher handicap player reduced to conform. For example: Player A is a 4 handicap, Player B is a 12 handicap. Player B will have his handicap reduced to a 9. Handicaps will place teams into flights. Handicaps are not used during play. Any player under age 50 with a 3 handicap or less will play the Blue tees both days to be eligible for Low Individual Champion. In the mens division those 65 and over are eligible to play the gold tees. When playing tees other than the white tees, players will have their handicaps adjusted accordingly for flighting purposes. Women will have their own flights and all play will be based from the red tees. With a full field there will be 8 teams per flight. *All handicaps must be USGA certified and must be verified by a local golf professional. Entries without USGA certified and verified handicap indexes will not be accepted.*

Tee Times: Tee times will be from 8 to 2 both days with a full field. Lower flights will tee off first on Saturday with higher flights teeing off first on Sunday. Saturday's pairings will be available by noon, Friday, August 19th.

Entry Deadline: Wednesday, August 17th

Name _____ Email _____ Phone (____) _____
Mailing Address _____ City _____ State _____ Zip _____
Club Name _____ Club Phone _____
HDCP Index _____ (not adjusted HDCP) Tees _____ Division of Play _____

Home Course _____

Will you be attending Friday dinner _____ are you bringing a guest _____

Will you be attending Saturday dinner _____ are you bringing a guest _____

Name _____ Email _____ Phone (____) _____
Mailing Address _____ City _____ State _____ Zip _____
Club Name _____ Club Phone _____
HDCP Index _____ (not adjusted HDCP) Tees _____ Division of Play _____

Home Course _____

Will you be attending Friday dinner _____ are you bringing a guest _____

Will you be attending Saturday dinner _____ are you bringing a guest _____

Mail entry to: Morehead City Country Club - PO Box 2400 - Morehead City, NC 28557

Payment must accompany entry. Make checks payable to MCCC

Credit Card Payment:

Name on Card _____ CC# _____ exp. _____

Music By





Mission: The First Tee of Eastern North Carolina will impact, influence and inspire the lives of young people by providing learning facilities and educational programs that build character and citizenship, instill life-enhancing values, and promote healthy choices through the game of golf and other enduring character-building activities.

Morehead City Country Club Members-

We are excited to inform you of a wonderful non-profit called **The First Tee** starting in our area and being held at **Morehead City Country Club**. It comes as no surprise that we welcome this program with enthusiasm, as there are overwhelming benefits for the youth in our county.

The First Tee is a 501(c)(3) nonprofit youth development organization with the purpose of providing young people, of all backgrounds, life-enhancing values such as **honesty, integrity, sportsmanship, and confidence**. Many of the participants are receiving **college scholarships and career opportunities** because of their involvement in The First Tee. Our goal is to implement **The First Tee National School Program** into elementary schools in Carteret County. The First Tee National School Program introduces elementary students to The First Tee Nine Core Values, and the Nine Healthy Habits, which are delivered through the game of golf during physical education classes. Physical educators receive special training, curriculum focused on core values, and equipment for effective learning environments.

Once the **The First Tee National School Program** is integrated into our school system, we will begin our **after school programs** in spring 2016 at Morehead City Country Club where The First Tee Nine Core Values and Nine Healthy Habits will be reinforced through the game of golf and various activities. This is a nonprofit where **community involvement is a must** and we believe it will be successful with the abundance of community support we feel here at Morehead City Country Club. We want to see it flourish in our Carteret County area as we know it will strengthen and enrich our community. Please contact Camille Gardner at camillegardner.tft@gmail.com to learn how to get involved or with any questions you may have.

Thanks for all you do to help our community!
Camille Gardner & MCCC Staff

EAGLE SPONSOR



**\$40 A TICKET
INCLUDES FOOD &
LIMITED OPEN BAR**

Email: moreheadcitycc.com
for tickets or call the
business office
at 252-726-666.

The Inaugural "The First Tee Classic" of 2016

Funding from the classic will make it possible
to start The First Tee in Carteret County!

**July 29th, 2016 – 2PM shotgun
w/lunch before play**
\$100 Entry, Limited Space Available.

Entertainment by the Holiday Band!

SPONSORSHIP PACKAGES THE FIRST TEE CLASSIC

Classic PAR - \$100

Hole signage in TFTENC Classic golf event.
Recognized in tournament promotional ads

Classic BIRDIE - \$500

PAR benefits+

Hole Sponsor (promotional material at hole)
at TFTENC Classic event Tournament
Foursome & Lunch

Classic EAGLE - \$1,000

BIRDIE benefits+

Use of TFTENC logo on your website
"Proud Sponsor" plaque

Classic ACE - \$2,500

BIRDIE + EAGLE benefits+

Signage in all TFTENC Classic golf events

Title Sponsor - \$5,000

BIRDIE+EAGLE+ACE benefits+
Title sponsor for Tournament

2016 Player Cards are now available for **\$75!**

Play from a list of 26 golf courses in Eastern North
Carolina for **\$25** (INCLUDES a cart)

Limit: One card per person

Email Camille at camillegardner.tft@gmail.com for golf
course list or more information

Name: _____

Phone: _____

Email: _____

Company Name: _____

Mailing Address: _____

City _____

State _____ Zip _____

Sponsorship chosen: _____

Player Card: Yes _____ No, thanks _____

Make checks payable to: **The First Tee of Eastern
North Carolina**

Mailing Address: **P.O. Box 2400**

Morehead City, NC 28557

If you have any questions please contact me at
camillegardner.tft@gmail.com or by calling MCCC's
golf shop at (252) 726-4917.



PerryGolf™
EST 1984

Nick Eatmon
252.342.0951

MoreheadCityCountryClub@gmail.com



Play the Game. See the World.

Morehead City Country Club Members Save on PerryGolf Tours & Cruises

Welcome Morehead City Country Club!

Morehead City Country Club has partnered with PerryGolf to provide our members with the finest in specialized golf travel experiences since 1984. PerryGolf offers golf tours and golf cruises to more than twelve of the world's most memorable destinations ranging from Scotland and Ireland to the Mediterranean, the Caribbean, New Zealand, Australia and South Africa. PerryGolf arranges every aspect of completely customized itineraries for groups of men, women and couples that combine marquee golf with sightseeing, whisky and wine tastings, castle and garden touring, spa treatments, safaris and luxury resorts plus packages with attendance to The Open Championship.

Details on MCCC Member Benefits along with PerryGolf Sample Schedules and a calendar of upcoming Golf Cruises & Escorted Tours are available at www.PerryGolf.com/MCCC.

Morehead City Country Club members will receive a golf shop credit equal to 10% of the value of a PerryGolf Tour and 5% of the value of a Cruise. Guests of MCCC members who travel on the same itinerary will receive a gift certificate redeemable with TurtleSons, an impressive manufacturer of world-class performance and lifestyle apparel for golfers, equal to 5% of the value of a PerryGolf Tour and Cruise.

RULES OF PLAY

1. Golfers must check in the golf shop. All play is to start on the #1 tee unless otherwise directed by the starter.
2. All golfers are to abide by suggestions and request of golf shop staff.
3. Dress Code: While on the golf course proper golf attire is required to be worn at all times. Acceptable: Turtle neck or shirt with a collar. Spikeless shoes or shoes with soft spikes. Hemmed shorts providing they are no shorter than 4" above the knee. Golf slacks or denim jeans providing they are not frayed or have any holes.
4. Pace of Play: A round of 18 holes should be completed in 3 hours and 50 minutes or less. If one or more holes are open in front of a group, the group must invite a waiting group to play through or catch the group in front of them. Groups falling behind will be asked to either increase their pace of play or to allow other groups to play through.
5. Ballmarks are to be properly repaired with a ballmark tool. Ballmarks, divots and footprints in bunkers should be raked to a level surface and the rake is to be left in the bunker. Fairway and tee box divots should be filled with the sand provided.
6. All player must have an individual set of clubs.
7. No child under 12 may play without an adult unless approved by Pro Shop staff. All operators of golf carts must be at least 16 years old.
8. Carts are to use the 90 degree rule unless instructed otherwise by Pro Shop staff. Cart path means cart path only for all carts. All carts must exit to the cart path at or before the sign located in the fairway. Golf carts must remain on the cart path around all greens, teeing grounds and all par 3's. Only two people and two golf bags are allowed on a cart. Two single rider carts are not allowed in any group except that a private cart owner-driver is not required to ride with another cart owner-driver.
9. Pull carts must be kept off of mounds, away from bunkers and 15 feet from greens and tee boxes. Pull or Push carts will be required to stay on the cart paths on days the golf course is deemed too wet.
10. Handicap privileges allow golfers to be no closer than 15 feet from greens and tee boxes. These privileges do not extend to another cart occupant unless he or she is also handicapped. Only carts with handicap privileges are allowed in practice areas.
11. Carry bags must be kept off fringes and greens
12. Any person bringing pets or animals to the golf course or Club property will be held responsible for damage inflicted and the cost of repairing such damage.
13. NO GENERAL ABUSE TO THE OVERALL FACILITY

PROCEDURE: All the above rules are to be followed by anyone using the grounds. Anyone observing a violation should report the violation to the pro shop.

DISTANCE MEASURING DEVICES – A player may obtain distance information by using a device measuring distance only. However, if during a stipulated round, a player uses a distance-measuring device that is designed to gauge or measure other conditions that might affect his play (gradient, wind speed, temperature, etc) the player is in breach of Rule 14-3, for which the penalty is disqualification, regardless of whether any such additional functions are actually used.

LOCAL RULES

Play is governed by the USGA Rules of Golf except as amended by Local Rules

DOUBT TO PROCEDURE – Rule 3-3: If a player is doubtful of his rights or the correct procedure during the play of a hole, he/she may, without penalty, complete the hole with two balls. The players must announce to his/her marker or a fellow player that he/she intends to play two balls and which ball he/she wishes to count if the Rules permit.

OUT OF BOUNDS – Defined by inside edge of white stakes at ground level. Public streets, parking lots, clubhouses and maintenance facilities are out of bounds. Typically, the edge of the road or curb nearest the golf course is the boundary. A ball that crosses such boundary is out of bounds even though it may lie on another part of the course.

WATER HAZARDS AND LATERAL WATER HAZARDS – When both stakes and lines define a water hazard the stakes identify the hazard and the lines define the hazard margin. When a lateral water hazard is defined only on one side, it is deemed to extend to infinity. Any ball hit to the left of the ditch bordering the left side of the 14th fairway cannot be played.

GROUND UNDER REPAIR – A) Area completely encircled by white lines. B) French drains filled with rocks or stones. C) Cut turf (newly sodded areas) even if unmarked.

IMMOVABLE OBSTRUCTIONS – A) Sprinkler control boxes B) Water coolers C) Staked trees. Relief is for the stakes and rope not the tree itself E) Pump house or any restroom building.

TEMPORARY IMMOVABLE OBSTRUCTIONS – Circulation fans are deemed to be TIO's. Relief is for stance, area of swing. Or if TIO intervenes directly between the players ball and the hole and on his line of play.

MOVABLE OBSTRUCTIONS – Stones in bunkers are movable obstructions

ROADS AND PATHS – Artificially surfaced paths are deemed obstructions. All other paths are deemed integral parts of the course.

SANDY AREAS – Sandy areas between holes 3 & 4, the trap just off the tee box on 11 and the trap on hole 12. These areas are not hazards and the clubhead may be grounded. Note: free relief for an embedded ball in loose sand is not allowed in these areas.

LANDSCAPED AREAS – Landscaped areas by the 13th green and 14th tee, area between the 12th & 16th greens along with landscaped areas on the mounds right of the fairway on hole 9 are to be played as ground under repair.

AERATION HOLE - On the putting green, a ball that comes to rest in or on an aeration hole may be placed at the nearest spot no nearer the hole.

EMBEDDED BALL THROUGH THE GREEN – Appendix I, page 127; Lifting an embedded ball is permitted through the green excluding sandy areas.

POWER LINE - If a ball strikes a power line, the player must disregard the stroke and play another ball from as near the same spot as possible.

WINTER RULES AND PREFERRED LIES – The USGA does not endorse "winter rules" and "preferred lies" and recommends the Rules of Golf be observed uniformly. Ground under repair is provided for in Rule 25 and occasional local abnormal conditions which may interfere with fair play and are not widespread should be defined as ground under repair. However, when the conditions warrant the following local rule will be invoked: A ball lying on a closely mown area through the green may, without penalty, be moved or may be lifted, cleaned and placed within one club length of where the original ball lay, but not nearer the hole and not in a hazard or on a putting green. A player may move or place his ball once and after the ball has been moved or placed, it is in play. Please check with the golf staff to determine if "preferred lies" are in effect.

PACE OF PLAY WINNERS \$100 EACH **MORT CONGLETON, DONNA MANNING, JOYCE OLSEN**

Pace of Play Guidelines ~ 3:45 Minutes (Time adjusted for cart path only days)

Group rights: As long as groups are within the pace of play guideline and within one hole of the next group they are not required to let players through. Anytime a group falls a hole or more behind they are obligated to close the gap or let quicker players through.

Pace of Play Suggestions:

Call your food and drink order in before making the turn. Plan your shot while riding to your ball, or while others are playing. Be ready when it is your turn. Go directly to your ball; don't follow others unless assisting in a search. When on paths only, take several clubs with you to your ball. Be efficient with pre-shot routine. Leave your clubs on the side of the putting green towards the next tee. Unless experienced, play standard tees, not the championship tees. If eligible play the new forward tees.

Pace of Play Rewards: Collect your golf receipt upon checking in. If you play in 3hrs and 45 minutes or less turn your receipt into the golf shop. On the first Friday of each month a name will be drawn with the winner receiving \$100 credit.

VIOLATION OF RULES: 1st Offense Verbal & written notice
2nd Offense Written notice & referred to Board of Directors



William "Wilf" Nicholas Eatmon Jr. Born 1/16/16

Alicia and I would like to thank the membership for the thoughtful gifts Will has received. It has been overwhelming! Special thanks to Judi Price for his Future Golf Pro Shirt! Hard to see in the range basket picture but it's Will's favorite!

Will is getting to know his extended family! Working for MCCC has a number of benefits, but the family feel given to Alicia & Will from the membership and staff is something we are very grateful for.

Will and mom are doing great! Alicia has been on the move! Taking Will to the beach, golf course, long walks around the neighborhood and even catching a Wake Forest game! Will has also become a frequent visitor to the daycare at the Sportscenter, which doesn't surprise anyone who knows Alicia best!

Will and the crew! Going to be fun to watch Regan Bradshaw "Smash", Hudson Forguites "Hector" and "Little Willy" grow up.

All nicknames given by Robbie Bittner. We think Robbie and Ilia's new born should be named, "Little Bit"!



Future US Open
Champion
Tucker Cook!

Will, Regan &
Hudson are ready
to meet you
Tucker!



Congratulations
David & Kristin

David tried to
get as much
practice time as
he could before
Tucker's arrival!



2016 Survey

Name:_____ Member Number:_____

What you like about the club and what you would like to see improved:

Suggestions for new events (Tournament & or Social Function)

General Issues	Strongly Agree	Somewhat Agree	Somewhat Disagree	Strongly Disagree		
Overall, I am pleased with the club						
The club is a good value for what I pay in dues						
Importance of Activities	Very Important	Somewhat Important	Little Importance			
Golf						
Social						
Swimming						
Tennis						
	Very Satisfied	Satisfied	Dissatisfied	Very Dissatisfied	Better Than Last Year	Worse Than Last Year
Condition of Greens						
Condition of Fairways						
Condition of Rough						
Condition of Tee Boxes						
Condition of Sand Traps						
Condition of Driving Range						
Pace of Play						
Quality of Tournaments						
Quantity of Tournaments						
Friendliness of Golf Staff						
Pro Shop Selection						
Quality of Food						
Food Selection						
Drink Selection						
Quality of Food & Beverage Functions						
Quantity of Food & Beverage Functions						
Clubhouse Exterior Appearance						
Clubhouse Bathroom Appearance						
Lounge Appearance						
Ballroom Appearance						
Friendliness of Food & Beverage Staff						
Communication to Membership						

Thank You THURSDAYS

FLATBREAD PIZZA
EVERY THURSDAY
FROM 5-8:30

50 CENT WINGS

BEER STARTING AT \$1.50
HOUSE DRINKS AND WINE \$4

TAKEOUT AVAILABLE 252-726-4917 EX 2

MARLIN BITES

- WINGS** .75
Traditional bone-in wings cooked to order and tossed in your choice of hot, mild, bbq, honey bbq, or teriyaki sauces
- CHICKEN TENDERS** \$4.75
All white meat chicken tenders and your choice of dipping sauce
- FRIES** \$3.50
Crispy perfection
- ONION RINGS** \$4.50
Our onion rings are made from whole white onions, battered with a subtle blend of spices, and fried up to order!
- HOT CHIPS** \$5.00
Crispy, crunchy, and full of flavor! Goes perfectly with our homemade buttermilk ranch
- FRIED CHEESE STICKS** \$5.00
Served with marinara or homemade buttermilk ranch
- FRIED MUSHROOMS** \$5.00
An all time favorite!! Fried to a golden brown and are crispy firm and delicious!
- CORN NUGGETS** \$5.00
A blend of sweet yellow corn and a rich, slightly sweet sauce, rolled in a golden batter for a sweet corn flavor
- OVER THE BORDER EGG ROLLS** \$5.50
Southwest chicken, veggies, and cheese, all wrapped in a crispy fried egg roll and served with spicy hot mustard
- JALAPENO POPPERS** \$6.50
Full flavored jalapenos stuffed with cool cream cheese then battered and fried to spicy perfection!
- BACON CHEDDAR RANCH FRIES** \$6.50
Crispy bacon, cheddar, and ranch over a basket of piping hot fries

AROUND THE GREEN

- HOUSE SALAD** \$4.00
Bed of greens with tomato, onion, peppers, cheese
- GRILLED CHICKEN SALAD** \$6.50
Our original house salad topped with an 8oz Chicken breast grilled to juicy perfection!
- CHEF SALAD** \$6.50
Our house salad topped with diced ham, turkey, and boiled eggs!
- ADD A SCOOP!** \$4.00
Add a scoop of our homemade pimento cheese, egg, tuna or chicken salad to a bed of lettuce for a yummy light lunch

DEEP SEA FAVORITES

- FISH AND CHIPS** \$9.00
A basket filled with fried Cod, hot chips, and fresh slaw!
- SHRIMP BASKET** \$7.50
A generous portion of fried shrimp, fries, and slaw
- OYSTER BASKET** \$9.75
Golden brown oysters served up with fries and slaw
- SURFER CLAM STRIPS** \$7.75
Jumbo fried clam strips with fries and slaw
- SHRIMP BURGER** \$6.25
Crisp fried shrimp piled high on a toasted bun with fresh slaw and chips
- BUFFALO SHRIMP BURGER** \$6.25
Our original shrimp burger with a KICK!
- OYSTER PO BOY** \$7.50
Oysters fried to a golden brown on a toasted bun with slaw and chips
- PLATTERS PULLED PORK PLATE** \$7.50
Eastern BBQ with slaw, french fries, and hush puppies
- CHEESE QUESADILLA** \$4.50
WITH STEAK OR CHICKEN \$6.50
Large flour tortilla stuffed with cheese and chicken or steak then grilled to a light brown. Served with salsa and sour cream
- CHICKEN FINGERS & FRIES** \$6.50
Three all white meat chicken tenders, fries and your choice of dipping sauce drinks
- FOUNTAIN DRINKS \$1.50**
COFFEE \$0.75
JUICE (CRANBERRY, ORANGE, GRAPEFRUIT) \$1.50

SANDWICHES AND SUCH SERVED WITH CHIPS

TUNA, CHICKEN, EGG, OR PIMENTO CHEESE SANDWICH \$5.00

Made here fresh and served on your choice of white or wheat

HAM, TURKEY, ROAST BEEF, OR BOLOGNA SANDWICH \$5.00

Your choice of cheese, lettuce, and tomato on white or wheat

COASTAL CHICKEN SANDWICH \$7.00

Grilled or fried Chicken breast topped with ham, swiss cheese, and smoky bbq sauce.

CHICKEN SANDWICH \$6.00

Grilled or Fried Chicken breast with lettuce and tomato on a toasted roll

MCCC COUNTRY CLUB \$7.50

Ham, turkey, bacon, lettuce, tomato, mayo, and two types of cheese on white or wheat toast complete this monster

BUFFALO CHICKEN SANDWICH \$6.00

Grilled or fried chicken breast tossed in your choice of hot or mild sauce with lettuce and tomato on a toasted roll

CHICKEN PARM SANDWICH \$6.50

Crispy Chicken smothered in mozzarella and marinara sauce on a toasted roll

GRILLED CHEESE SANDWICH \$4.00

Melted American cheese oozes from buttery grilled white or wheat

BLT \$5.00

Crisp Bacon, ripe tomato, lettuce, and mayo, your choice of toast

REUBEN \$6.25

Corned beef, sauerkraut, swiss cheese, and 1000 island on rye bread

TURKEY REUBEN \$6.75

Turkey, sauerkraut, swiss cheese, and 1000 island dressing on grilled rye bread

PHILLY CHEESE STEAK \$6.50

6 oz of perfectly seasoned chopped steak, sautéed onions, mushrooms, green peppers, and provolone cheese on a toasted roll

BEEF AND CHEDDAR MELT \$5.00

Hot roast beef and cheddar cheese on a toasted roll

PORK BBQ SANDWICH \$5.00

Eastern pulled pork bbq piled on a toasted bun with slaw

PUB BURGER \$6.00

Hand pattied quarter pound burger grilled to order with cheese, lettuce, tomato, and pickle on a toasted bun

SOUPS SOUP OF THE DAY BOWL \$4.00 CUP \$3.00

BEST BREAKFAST IN TOWN SERVED ALL DAY SANDWICHES

Bacon, Egg, and Cheese whole \$4.75 ½ \$2.75

Sausage, Egg and Cheese whole \$4.75 ½ \$2.75

Ham, Egg and Cheese whole \$4.75 ½ \$2.75

Bacon, Lettuce, Tomato whole \$5.00 ½ \$2.75

OMELETS ALL SERVED WITH TOAST & JELLY

BACON TEMPTATION \$5.25

Loaded with bacon and your choice of cheese

SAUSAGE TEMPTATION \$5.25

Loaded with Sausage and your choice of cheese

WESTERN \$6.25

Crispy bacon, onions, peppers, mushrooms, and cheddar cheese, with salsa and sour cream on the side

GARDEN \$5.25

An abundance of green peppers, mushrooms, onions, tomatoes and cheddar cheese

MEAT LOVERS \$7.00

A generous portion of crispy bacon, sausage, ham, and cheddar cheese

CHICKEN FAJITA \$7.00

Grilled Chicken fajita breast strips, onions, and peppers with salsa and cheddar cheese

BREAKFAST PLATTERS

BREAKFAST #1 \$5.50

Two eggs served any style with one pancake, and coffee

BREAKFAST #2 \$5.50

Two eggs served any style with bacon or sausage, grits or potatoes, toast, and coffee

M.C.C.C SPECIAL \$4.50

Two eggs served any style with two strips of bacon and toast

LAST OFF THE TEE \$7.25

Three eggs served any style, with bacon or sausage, grits or potatoes, one pancake, toast, and coffee

SIMPLE AND FIT \$4.00

Two scrambled egg whites, yogurt, and wheat toast Fluffy Side

FRENCH TOAST \$2.25

Four fluffy triangle sliced pieces topped with powdered sugar

ONE PLATE SIZED BUTTERMILK PANCAKE \$3.75

A touch of vanilla off the griddle, choice of bacon or sausage

BREAKFAST A la Carte

Side of grits, one egg, sliced tomatoes, or toast \$1.25

Side of home fries \$1.50 Bacon, ham, or sausage \$2.25

Buttermilk Pancake or Waffle \$2.25